

# TOTAL

C L O T H I N G

YOUR SCHOOL UNIFORM SUPPLIER

## EARLY BIRD OFFER

*Get this...*

**ULTIMATE HELIX OXFORD  
SCHOOL ESSENTIALS  
PENCIL CASE**

**For £8.00**

(RRP £15.00)

*Offer available from  
25th May until  
16th July 2021*



**Contains:** 1x Large Clear Pencil Case | 1x Oxford Maths Set  
30 cm Shatterproof Ruler | 4 Pack of Oxford Soft Grip Pens  
Box of 12 2H pencils | 12 pack of Oxford Colouring Pencils  
1x Large Sleeved Eraser and Sharpener Set  
and a Pack of 4 Oxford Highlighters.



**SCHOOLS**



## UNIFORM GUIDE AND PRICE LIST

[www.totalclothingshop.co.uk/pixbrook](http://www.totalclothingshop.co.uk/pixbrook)

Like us on  
**facebook** 

*To stay up to date  
with our latest offers.*

Please check our website: [www.totalclothing.co.uk](http://www.totalclothing.co.uk)  
for the latest information updates.

PLEASE ORDER BY  
**THURSDAY 12th AUGUST**  
For delivery before  
back to school.

## INTRODUCTION

### Dear Parents & Carers

Watch this [video](#) for all of the Pix Brook Academy uniform requirements and helpful sizing hints.

We have designed this booklet to help you to order your school uniform with ease, whilst understanding the requirements from the school. Given the current Covid-19 situation, we have added some additional information to try and make it as easy as possible.

We understand how difficult it can be when you are buying secondary school uniform for the first time (or even second or third time) as children's sizes can be so different. With this in mind, we have designed this booklet to help you every step of the way.

We start with a [Uniform Measuring Guide](#) to ensure that you measure correctly for each garment. On this page you will see how to measure for each part of the school uniform you will need.

We have also included a [Hints & Tips](#) section on buying your school uniform.

You will also see a [Uniform Policy](#) which tells you how the uniform should be worn and what is not acceptable.

On the pages that follow there is a comprehensive [Uniform Size Guide](#) detailing the garments required for your school uniform. Garments will be marked compulsory and optional so you can see what you need to buy now and what you can maybe purchase later.

We always encourage parents to order as soon as possible to ensure you will have the correct uniform for back to school.

Lastly you will see the link to order your school uniform on-line. This can be done via your school website.

We have a returns policy of 28 days from your purchase to return or exchange of your garments. It would be great if you could send returns as soon as possible to help our stock levels.

We are here to help you get the best fit for school uniform for your child. If you have any questions please call our friendly customer care team on **01733 394758** or via email at [customerservices@totalclothing.co.uk](mailto:customerservices@totalclothing.co.uk) who will be happy to advise you.

Kind regards

**Christine, James, Ben and Janet**

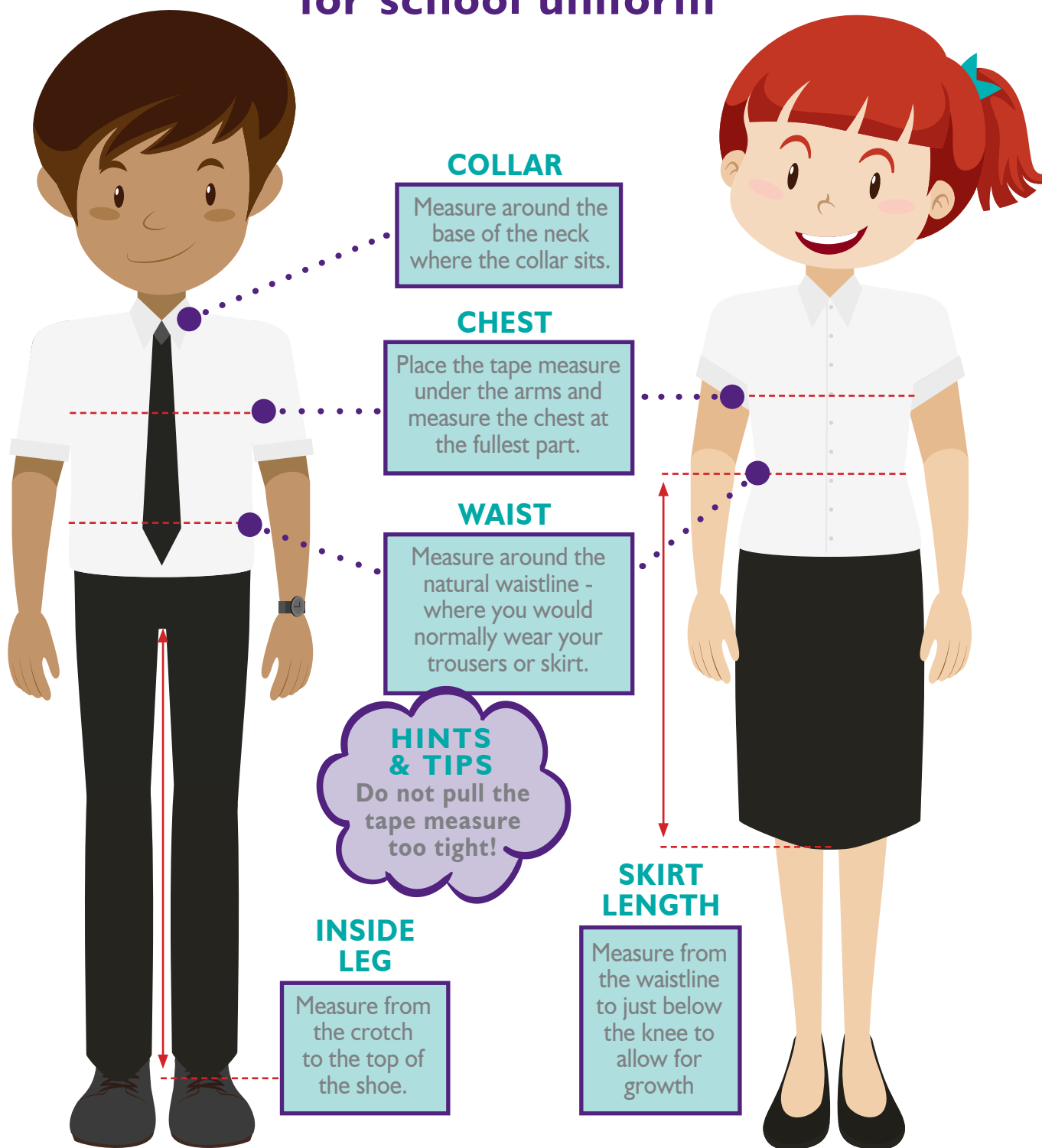
**The Schools Team | Total Clothing, part of F R Monkhouse Ltd**



SCHOOLS

## UNIFORM MEASURING GUIDE

### How to measure your child for school uniform



## PIX BROOK ACADEMY | UNIFORM

### SCHOOL UNIFORM

Our uniform is an outward sign of students' commitment to and pride in their school. It has been chosen with regard to what is comfortable and appropriate for 9 to 16-year olds.

School uniform is available from our supplier Total Clothing (\* items are exclusively available from Total Clothing). [www.totalclothingshop.co.uk/pixbrook](http://www.totalclothingshop.co.uk/pixbrook) 01733 374705.

### KS2 (YEARS 5 & 6) UNIFORM

#### BOYS

- Regulation white button neck shirt (long or short sleeved)
- Pix Brook Academy tie\*
- Pix Brook Academy purple jumper with school logo\*
- Grey tailored school trousers or shorts
- Plain black or grey socks
- Black leather shoes

#### GIRLS

- White open neck (revere) blouse
- Pix Brook Academy purple cardigan with school logo\*
- Grey tailored school skirt or tailored trousers
- Grey or black knee-high socks/tights (white ankle socks optional in Summer term)
- Black leather shoes



## PIX BROOK ACADEMY | UNIFORM

### KS3 AND KS4 (YEARS 7 AND ABOVE) UNIFORM

#### BOYS

- Regulation white button neck shirt (long or short sleeved)
- Pix Brook Academy tie\*
- Pix Brook Academy blazer with school logo\*
- Pix Brook Academy grey jumper with school logo\* (optional)
- Grey tailored school trousers or shorts
- Plain black or grey socks
- Black leather shoes

#### GIRLS

- White open neck (revere) blouse
- Pix Brook Academy blazer with school logo\*
- Pix Brook Academy grey jumper with school logo\* (optional)
- Pix Brook Academy kilt\* or grey tailored school trousers
- Grey or black knee-high socks/tights (white ankle socks optional in Summer)
- Black leather shoes



### SCHOOL PE KIT

It is an expectation that all students take part in PE lessons in the correct PE kit.

(\* items are exclusively available from Total Clothing [www.totalclothingshop.co.uk/pixbrook](http://www.totalclothingshop.co.uk/pixbrook) 01733 374705.

#### BOYS

- Pix Brook Academy boys PE polo shirt\*
- Pix Brook Academy boys PE shorts\*
- Pix Brook Academy PE socks\*
- Pix Brook Academy PE hooded top (optional)\*
- Plain black jogging bottoms (optional)
- Trainers (white soles only)
- Moulded football boots
- Shin pads
- Gum shield (from Year 7)

#### GIRLS

- Pix Brook Academy girls PE polo shirt\*
- Pix Brook Academy girls PE skort\* or shorts
- Pix Brook Academy PE socks\*
- Pix Brook Academy PE hooded top (optional)\*
- Plain black jogging bottoms (optional)
- Trainers (white soles only)
- Moulded football boots
- Shin pads
- Gum shield (from Year 7)

## PIX BROOK ACADEMY | UNIFORM STANDARDS

### UNIFORM STANDARDS FOR ALL YEARS

Students who wish to wear a variation of the policy, need to make an appointment to see the Vice Principal to discuss the request.

- **SHIRTS** must be tucked in at all times.
- **TROUSERS** should be straight legged not flared or skinny. They should not include logos. Trousers should not have visible zips or buckles. Tailored grey shorts can be worn.
- **SKIRTS** should be standard grey worn just above the knee and be loose fitting. Tight fitting skirts, or stretchy lycra based skirts are not permitted.
- **THE PIX BROOK ACADEMY KILT** should be worn just above the knee and be loose fitting
- **SHOES** must be all black and polishable/patent. Sports shoes of any kind, including plimsolls / black trainers/Vans/Converse/Airforce, or any canvas footwear are not acceptable
- **HOODIES** or **HATS** should not be worn in the school
- As daily life in school involves a great deal of interpersonal contact, it is inappropriate to wear items that cover facial expressions: girls who wish to wear **HEADSCARVES** in observance of their religious beliefs may do so, as long as these conform to the requirements listed below:

The fabric should be lightweight and a plain dark colour

The headscarves should be folded under the chin, taken round to the back of the neck and the ends tucked in - this conforms to health and safety requirements

Headscarves should be worn so that the collar of the polo shirt can be seen.

### **JEWELLERY, HAIRSTYLES AND MAKE-UP**

In general, jewellery is inappropriate for school. Apart from the security issue, there are health and safety issues about wearing some items of jewellery. Large hooped earrings, flesh tunnels, ear stretchers, bars, ear cuffs, spikes and chains, for example, are not allowed for these reasons.

#### **Students must limit jewellery to:**

- small sleepers or stud earrings (one per ear) - multiple earrings are not permitted (these must be removed or taped over for PE)
- a watch

The school is not insured for students' jewellery or other personal effects if these go missing.

Extremes of hairstyle are not appropriate for school and are not acceptable. Hair colour must be natural shades only. Fake nails, nail polish and make-up are not permitted.

Body piercing is strictly limited to the ears, i.e. no eyebrow/ lip piercings are allowed. Nose rings are not permitted without discussion with the Principal.

If you are in any doubt about the appropriateness of clothing items, hairstyles or jewellery, please contact the school for clarification.

### **PARENTAL SUPPORT**

We expect parent(s)/carer(s) to support us in maintaining high standards of uniform. If for any reason a parent/carers is unable to provide uniform due to financial difficulties, we may be able to help. Please contact the school, in confidence, as a matter of urgency and ask to speak to the Head of Year. We keep a supply of uniform items which are, in many cases, new and are in all cases laundered and ready to wear. These items may be borrowed for a limited period. We regularly update our stock, so there is no reason why any student should be out of uniform.

## PIX BROOK ACADEMY | UNIFORM STANDARDS

### STUDENTS ARRIVING AT SCHOOL OUT OF UNIFORM

Each morning, Tutors will check the uniform of students in their group. If the Tutor is unable to resolve an issue, students out of uniform will be referred to the year group office. The Head of Year will then do one of three things:

1. arrange for a student to borrow an item(s) of uniform
2. contact home and ask a parent/carer to bring in an item of uniform
3. consult with the Vice Principal and refer a student to the Achievement Support Centre (ASC) where he/she will complete their lesson work until the uniform issue is resolved. Students will not be permitted to undertake their normal lessons in class if they are not in uniform, they will also not be able to undertake break and lunchtime in normal circulation.

### MEDICAL ISSUES REGARDING FOOTWEAR

In exceptional circumstances, students will be allowed to wear black trainers for medical reasons. Parent(s)/ carer(s) must contact the Principal in writing and provide medical evidence (e.g. Doctor's/ hospital note) to support this request. In most cases, sensible school shoes provide better support for injuries than training shoes. This will be subject to regular review by the Year team.

### MOBILE PHONES, IPADS, AIRPODS ETC.

Pix Brook Academy strongly discourages the bringing into school of expensive items such as mobile phones, iPads or AirPods etc. We take no responsibility for such items. If these items are brought into school, then they must be handed in to be stored during the school day. They must be switched off. We reserve the right to ban students from bringing such items to school if they use them inappropriately, or are in breach of our clear expectations.

### BEING EQUIPPED FOR SCHOOL

An important part of every student's uniform is the equipment brought into school each day to facilitate learning. Secure lockers are available for all students to store books, PE kit and other items of school equipment.

**All students should have the following items on a daily basis:**

- Notebook
- Pencils
- Rubber
- Sharpener
- Ruler (not bendy)
- Glue stick
- Colouring pencils
- Blue handwriting pens (fibre tip, not biro or fountain)
- Scissors (round end)
- Highlighters
- Reading book
- Student diary

Being fully equipped is a sign of a student's commitment to their learning.

**"Be prepared, be successful!"**

This booklet should leave no student or parent/carer unsure about the school expectations regarding uniform, PE kit, mobile phones, equipment etc. If any parent wishes to discuss any issue(s) arising from this uniform information, they should contact the school at their earliest convenience.





SCHOOLS

## HINTS & TIPS | SPECIFIC TO YOUR SCHOOL

### HINTS & TIPS

#### SWEATSHIRTS & CARDIGANS

Make sure to refer to the following size guide and/or the webshop for the ages and chest size equivalent.

### HINTS & TIPS

#### SCHOOL TIES

Girls do not need to wear a tie. Therefore make sure you purchase 'Rever Collar Blouses' as opposed to button-up blouses.

### HINTS & TIPS

#### PE SKORTS & LEGGINGS

These come in waist sizes so use your skirt/trouser measurement as a guide.

### HINTS & TIPS

#### PE TOPS

PE Tops should always be bought slightly bigger to allow for growth and ease of taking on and off in a hurry when changing.

### HINTS & TIPS

#### PE SHORTS

The PE Shorts have a draw string to pull the waist in tighter.

### HINTS & TIPS

#### GIRLS PE TOPS

The girls PE polos are shorter in length, tighter fitting and do not have buttons at the top.

### HINTS & TIPS

#### DON'T FORGET

Don't forget name labels, water bottles and PE bags!

[www.totalclothingshop.co.uk/pixbrook](http://www.totalclothingshop.co.uk/pixbrook)

# PIX BROOK ACADEMY | YEAR 5 & 6 GENERAL UNIFORM



## PIX BROOK ACADEMY V NECK SWEATSHIRT

From **£12.00**

QUANTITY/SIZE REQUIRED

AGE	AGE	AGE	AGE	SIZE
7/8	9/10	11/12	13	S
Chest 28"	Chest 30"	Chest 32"	Chest 34"	Chest 36"

Purple with left chest embroidery.  
Drop shoulder V neck sweatshirt. Ribbed welt hem and cuffs. Twin needled seams. Taped back neck seam.  
Soft but durable. Age Chest (to fit) 7/8- 28in, 9/10- 30in, 11/12- 32in, 13- 34in, Small- 36in.



## PIX BROOK ACADEMY CARDIGAN

From **£13.00**

QUANTITY/SIZE REQUIRED

AGE	AGE	AGE	AGE	SIZE
7/8	9/10	11/12	13	S
Chest 28"	Chest 30"	Chest 32"	Chest 34"	Chest 36"

Purple with left chest embroidery.  
Drop shoulder sweat cardigan. Ribbed welt and cuffs. Two patch pockets.  
Age Chest (to fit) 7/8- 28in, 9/10- 30in, 11/12- 32in, 13- 34in, S- 36in.



## PIX BROOK ACADEMY SHORT SLEEVE REVER COLLAR BLOUSES

From **£13.50**

QUANTITY/SIZE REQUIRED

CHEST	CHEST	CHEST	CHEST	CHEST	CHEST	CHEST	CHEST	CHEST	CHEST
26	28	30	32	34	36	38	40	42	44

White short sleeve blouses in easycare fabric, with a two piece collar.  
Twin pack. Machine washable and easy care.



## PIX BROOK ACADEMY SHORT SLEEVE EASYCARE POLYCOTTON SHIRTS

From **£13.00**

QUANTITY/SIZE REQUIRED

NECK	NECK	NECK	NECK	NECK	NECK	NECK	NECK	NECK	NECK	NECK	NECK
11	11.5	12.5	13.5	13	14	14.5	15	15.5	16	16.5	17

White shirt. Button to neck. Non-iron. Chest pocket. Short sleeve. Twin pack. Machine washable. Available in collar sizes in inches 11in (28cm) - Age 3/4 yrs, 11.5in (29cm) - Age 5/6 yrs, 12in (30cm) - Age 7/8 yrs, 12.5in (32cm) - Age 9/10 yrs, 13in (33cm) - Age 11 yrs, 13.5in (34cm) - Age 12 yrs, 14in (36cm) - Age 13 yrs, 14.5in (37cm) - Age 14 yrs, 15in (38cm) - Age 15 yrs, 15.5in (39cm) - Age 16 years, 16in (41cm), 16.5in (42cm) & 17in (43cm).



## PIX BROOK ACADEMY LONG SLEEVE SHIRTS

From **£13.00**

QUANTITY/SIZE REQUIRED

NECK	NECK	NECK	NECK	NECK	NECK	NECK	NECK	NECK	NECK	NECK	NECK
11	11.5	12.5	13.5	13	14	14.5	15	15.5	16	16.5	17

White shirt. Button to neck. Non-iron. Chest pocket. Long sleeve. Twin pack. Machine washable. Available in collar sizes in inches 11in (28cm) - Age 3/4 yrs, 11.5in (29cm) - Age 5/6 yrs, 12in (30cm) - Age 7/8 yrs, 12.5in (32cm) - Age 9/10 yrs, 13in (33cm) - Age 11 yrs, 13.5in (34cm) - Age 12 yrs, 14in (36cm) - Age 13 yrs, 14.5in (37cm) - Age 14 yrs, 15in (38cm) - Age 15 yrs, 15.5in (39cm) - Age 16 years, 16in (41cm), 16.5in (42cm) & 17in (43cm).



## PIX BROOK ACADEMY TIE

From **£6.25**

QUANTITY/SIZE REQUIRED

Black/purple broad stripe 14inch clip on tie.

## PIX BROOK ACADEMY | YEAR 7 GENERAL UNIFORM



### PIX BROOK ACADEMY YEAR 7 BOYS BLAZER

CHEST 28 CHEST 30 CHEST 32 CHEST 34 CHEST 36

Purple. Left chest embroidery. Made from 100% woven Polyester twill, our Ziggys blazer is the perfect finish for any school uniform. With internal zip pockets, Maxtech Plus stain resistant finish and concealed zip.

From **£27.25**

QUANTITY/SIZE REQUIRED



### PIX BROOK ACADEMY YEAR 7 GIRLS BLAZER

CHEST 28 CHEST 30 CHEST 32 CHEST 34 CHEST 36

Purple. Left chest embroidery. Made from 100% woven Polyester twill, our Ziggys blazer is the perfect finish for any school uniform. With internal zip pockets, Maxtech Plus stain resistant finish and concealed zip.

From **£27.25**

QUANTITY/SIZE REQUIRED



### PIX BROOK ACADEMY YEAR 7 V NECK

CHEST 28 CHEST 30 CHEST 32 CHEST 34 CHEST 36

Grey/Purple. Left chest embroidery. Performa 50 v neck jumper. 1 x 1 rib main body construction. Snug fit hems, cuffs and neckline. Raglan sleeves.

From **£15.80**

QUANTITY/SIZE REQUIRED



### PIX BROOK ACADEMY TIE

Black/purple broad stripe 14inch clip on tie.

From **£6.25**

QUANTITY/SIZE REQUIRED



### PIX BROOK ACADEMY YEAR 7 KILT

AGE 9/10 AGE 11/12 AGE 12/13 W/L 28/22 W/L 28/25 W/L 30/22 W/L 30/25 W/L 32/22 W/L 32/25  
W/L 34/22 W/L 34/25 W/L 36/22 W/L 36/25

Purple/grey. Permanent pleated kilt with elasticated back. Waist sizes are in inches.

From **£18.00**

QUANTITY/SIZE REQUIRED



### PIX BROOK ACADEMY SLIMBRIDGE UNISEX GREY TROUSERS

W/L 26/28 W/L 28/30 W/L 30/30 W/L 30/32 W/L 30/34 W/L 32/30 W/L 32/32 W/L 32/34  
W/L 34/32 W/L 34/34 W/L 36/32

Grey. Fashionable slim fit. Flat front. Internal waist adjuster. Two side pockets plus back pocket with button. Belt loops.

From **£17.50**

QUANTITY/SIZE REQUIRED



### PIX BROOK ACADEMY GIRLS SLIM LEG TROUSER

W/L 22/28 W/L 22/30 W/L 24/28 W/L 24/30 W/L 26/28 W/L 26/30 W/L 28/28 W/L 28/30 W/L 30/28 W/L 30/30  
W/L 32/30 W/L 34/30 W/L 36/30

Grey slim leg girls trouser. Front pocket. Contrast internal binding. Internal waist adjuster. Waist sizes are in inches. Available in various lengths.

From **£17.50**

QUANTITY/SIZE REQUIRED

## PIX BROOK ACADEMY | YEAR 7 GENERAL UNIFORM



### PIX BROOK ACADEMY SHORT SLEEVE REVER COLLAR BLOUSES

CHEST 26 CHEST 28 CHEST 30 CHEST 32 CHEST 34 CHEST 36 CHEST 38 CHEST 40 CHEST 42 CHEST 44

White short sleeve blouses in easycare fabric, with a two piece collar. Twin pack. Machine washable and easy care.

From £13.50

QUANTITY/SIZE REQUIRED



### PIX BROOK ACADEMY SHORT SLEEVE EASYCARE POLYCOTTON SHIRTS

NECK 11 NECK 11.5 NECK 12.5 NECK 13.5 NECK 13 NECK 14 NECK 14.5 NECK 15 NECK 15.5 NECK 16 NECK 16.5 NECK 17

White shirt. Button to neck. Non-iron. Chest pocket. Short sleeve. Twin pack. Machine washable. Available in collar sizes in inches 11in (28cm) - Age 3/4 yrs, 11.5in (29cm) - Age 5/6 yrs, 12in (30cm) - Age 7/8 yrs, 12.5in (32cm) - Age 9/10 yrs, 13in (33cm) - Age 11 yrs, 13.5in (34cm) - Age 12 yrs, 14in (36cm) - Age 13 yrs, 14.5in (37cm) - Age 14 yrs, 15in (38cm) - Age 15 yrs, 15.5in (39cm) - Age 16 years, 16in (41cm), 16.5in (42cm) & 17in (43cm).

From £13.00

QUANTITY/SIZE REQUIRED



### PIX BROOK ACADEMY LONG SLEEVE SHIRTS

NECK 11 NECK 11.5 NECK 12.5 NECK 13.5 NECK 13 NECK 14 NECK 14.5 NECK 15 NECK 15.5 NECK 16 NECK 16.5 NECK 17

White shirt. Button to neck. Non-iron. Chest pocket. Long sleeve. Twin pack. Machine washable. Available in collar sizes in inches 11in (28cm) - Age 3/4 yrs, 11.5in (29cm) - Age 5/6 yrs, 12in (30cm) - Age 7/8 yrs, 12.5in (32cm) - Age 9/10 yrs, 13in (33cm) - Age 11 yrs, 13.5in (34cm) - Age 12 yrs, 14in (36cm) - Age 13 yrs, 14.5in (37cm) - Age 14 yrs, 15in (38cm) - Age 15 yrs, 15.5in (39cm) - Age 16 years, 16in (41cm), 16.5in (42cm) & 17in (43cm).

From £13.00

QUANTITY/SIZE REQUIRED

## PIX BROOK ACADEMY | PE UNIFORM



### PIX BROOK ACADEMY GIRLS PE POLO SHIRT

CHEST 26/28 CEST 30/32 CEST 32/34 CEST 34/36

Left chest embroidery. Black/purple/white polo shirt with contrast panels and tape. Seam covered neck. V neck with collar and capped sleeves. Available in sizes 26/28in, 30/32in and 32/34in.

From **£14.99**

QUANTITY/SIZE REQUIRED



### PIX BROOK ACADEMY BOYS PE POLO SHIRT

CHEST 26/28 CEST 30/32 CEST 32/34 CEST 34/36

Left chest embroidery. Black/purple/white polo shirt with contrast panels and tape. Seam covered neck. 3 button placket with fabric collar. Available in sizes 26/28in, 30/32in & 32/34in.

From **£14.99**

QUANTITY/SIZE REQUIRED



### PIX BROOK ACADEMY GIRLS PE SKORT

WAIST 22 WAIST 24 WAIST 26 WAIST 28 WAIST 30 WAIST 32

Black/purple/white. Matches Girls Polo Shirt. Designed for a fitted look. Fabric composition ensures freedom of movement. Flat elasticated waistband. Waist measurements are in inches.

From **£16.99**

QUANTITY/SIZE REQUIRED



### PIX BROOK ACADEMY BOYS PE SHORTS

WAIST 24/26 WAIST 28/30 WAIST 32 WAIST 34

Black/purple/white. Longer and wider leg for freedom of movement. Elasticated waistband and tie cord. Waist sizes are in inches.

From **£9.99**

QUANTITY/SIZE REQUIRED



### PIX BROOK ACADEMY BOYS RUGBY TOP

WAIST 26/28 WAIST 30/32 WAIST 32/34 WAIST 34/36

Black/purple/white. 2 ply fully reversible garment for a contrast look. Small grandad collar with placket and single button. Twin stitched and taped at seams. Available in sizes 26/28in, 30/32in & 32/34in.

From **£22.00**

QUANTITY/SIZE REQUIRED



### PIX BROOK ACADEMY PE HOODED TOP

WAIST 26/28 WAIST 30/32 WAIST 32/34 WAIST 34/36

Black/purple/white. Left chest embroidery. Hooded top with Side Piping. Double Hood with Contrast Inner Lining. Pouch Pocket. Can be worn by girls and boys. Available in sizes 26/28in, 30/32in & 32/34in.

From **£19.99**

QUANTITY/SIZE REQUIRED



### PIX BROOK ACADEMY PE SOCKS

SIZE M  
Shoe Size  
1-5.5

SIZE L  
Shoe Size  
6-12

Black/purple/white. Cushioned sole and contoured foot guarantees comfort. Ankle and arch supports offer added protection. Available in sizes Medium (shoe size) 1/5.5 and Large 6/12

From **£6.50**

QUANTITY/SIZE REQUIRED

## PIX BROOK ACADEMY | PE UNIFORM & ADDITIONAL ITEMS



### PIX BROOK ACADEMY LEGGINGS

CHEST 22/24    CHEST 26/28    CHEST 30/32

Black/Silver. 88 per cent Nylon, 12 per cent Spandex. Wide comfortable elasticated waistband. Silver reflective tape trimming. Opaque fabric.

[\(Only to be worn underneath the PE SKORT\).](#)

From **£12.99**

QUANTITY/SIZE REQUIRED



### PIX BROOK ACADEMY PE BAG

One size. Purple. Front logo embroidery. Popular classic drawstring backpack. Reinforced corners with metal eyelets. Strong nylon cord carry handles. Water-resistant. Dimensions 43H x 34W cm. 13 litre capacity.

From **£5.99**

QUANTITY REQUIRED



### PIX BROOK ACADEMY BEANNIE HAT

Purple with front embroidery.

From **£5.70**

QUANTITY/SIZE REQUIRED



### OPAQUE TIGHTS *(Optional)*

70 denier. Twin Pack. Fine comfort flatlock seams. Integral waist band - not cheap turned tunnel elastic. Only Du Pont Lycra. Available in two sizes - teens and ladies.

From **£6.25**

QUANTITY/SIZE REQUIRED



### SCHOOL WATER BOTTLE *(Optional)*

Clear 500ml plastic drinks bottle.

From **£2.75**

QUANTITY REQUIRED



### NAME LABELS *(Optional)*

By using our printed iron-on labels, your child's uniform and sports kit can be identified easily and efficiently. These labels can be ironed on anywhere inside your child's garment. Maximum of 17 characters. Packs of 25 at £3.50 or 50 at £5.00.

From **£3.99**

QUANTITY/SIZE REQUIRED



### WOVEN SEW IN LABELS *(Optional)*

Traditional 8mm sew in name tapes for sewing in to clothes x 72

From **£7.99**

QUANTITY/SIZE REQUIRED

## PIX BROOK ACADEMY | ADDITIONAL ITEMS



### SEAM TAPE (Optional)

Black iron on seam tape. For a secure, neat finish on hems.

From 99p

QUANTITY/SIZE REQUIRED



### MOUTHGUARDS

Tested in accordance with BSI DD-253-2001 and CE compliant. Boil and bite fitting.  
Available in junior and adult.  
N.B Colour may vary

From £2.99

QUANTITY/SIZE REQUIRED



### BRONZE TRAINING LEVEL MOUTHGUARD

Training level self-fit mouthguard. Gum Shield for Rugby, Hockey and other Contact Sports The impact resistant outer layer absorbs high impact blows and spreads the force over a larger area, shielding your teeth and gums from injury. Grips your teeth in all the right places.

PLEASE NOTE WE ARE UNABLE TO ACCEPT THIS ITEM BACK FOR EXCHANGE OR REFUND.

From £6.50

QUANTITY/SIZE REQUIRED



### PRECISION PRO SHIN & ANKLE PADS

BLACK/RED. Plastic PPCP shield. 6mm EVA foam backing. Stitched ankle sock with padding.  
Size is measured as height in cm (from top of head to toes) Medium - 140-160cm, Large 160-180cm.

From £10.99

QUANTITY/SIZE REQUIRED



### SHARPIE FINE MARKER

BLACK Fine Marker. Permanent on most hard to mark surfaces. Double fine fibre tip.

From £2.50

QUANTITY/SIZE REQUIRED



[www.totalclothingshop.co.uk/pixbrook](http://www.totalclothingshop.co.uk/pixbrook)

**Contains:** 1x Large Clear Pencil Case | 1x Oxford Maths Set  
30 cm Shatterproof Ruler | 4 Pack of Oxford Soft Grip Pens  
Box of 12 2H pencils | 12 pack of Oxford Colouring Pencils  
1x Large Sleeved Eraser and Sharpener Set  
and a Pack of 4 Oxford Highlighters.

## SCHOOLS

[www.totalclothingshop.co.uk/pixbrook](http://www.totalclothingshop.co.uk/pixbrook)



SCHOOLS

## SHOP LOCATION

### HINTS & TIPS

Please check our website  
[www.totalclothing.co.uk](http://www.totalclothing.co.uk)  
for regular updates or click [here](#)  
to book a fitting appointment.



### HINTS & TIPS

Appointments will be  
available to book on line  
from Monday 7th June.

No 9 Botolph Trading Estate,  
Oundle Road, Peterborough PE2 9QP  
(Turn onto Botolph Bridge next to Hilton Van Hire)

01733 394758

[customerservices@totalclothing.co.uk](mailto:customerservices@totalclothing.co.uk)



SCHOOLS

[www.totalclothingshop.co.uk/pixbrook](http://www.totalclothingshop.co.uk/pixbrook)